

Update on Public Health Emergency Preparedness and Response



Naveena Bobba

Director, Public Health Emergency Preparedness and Response

July 19, 2016

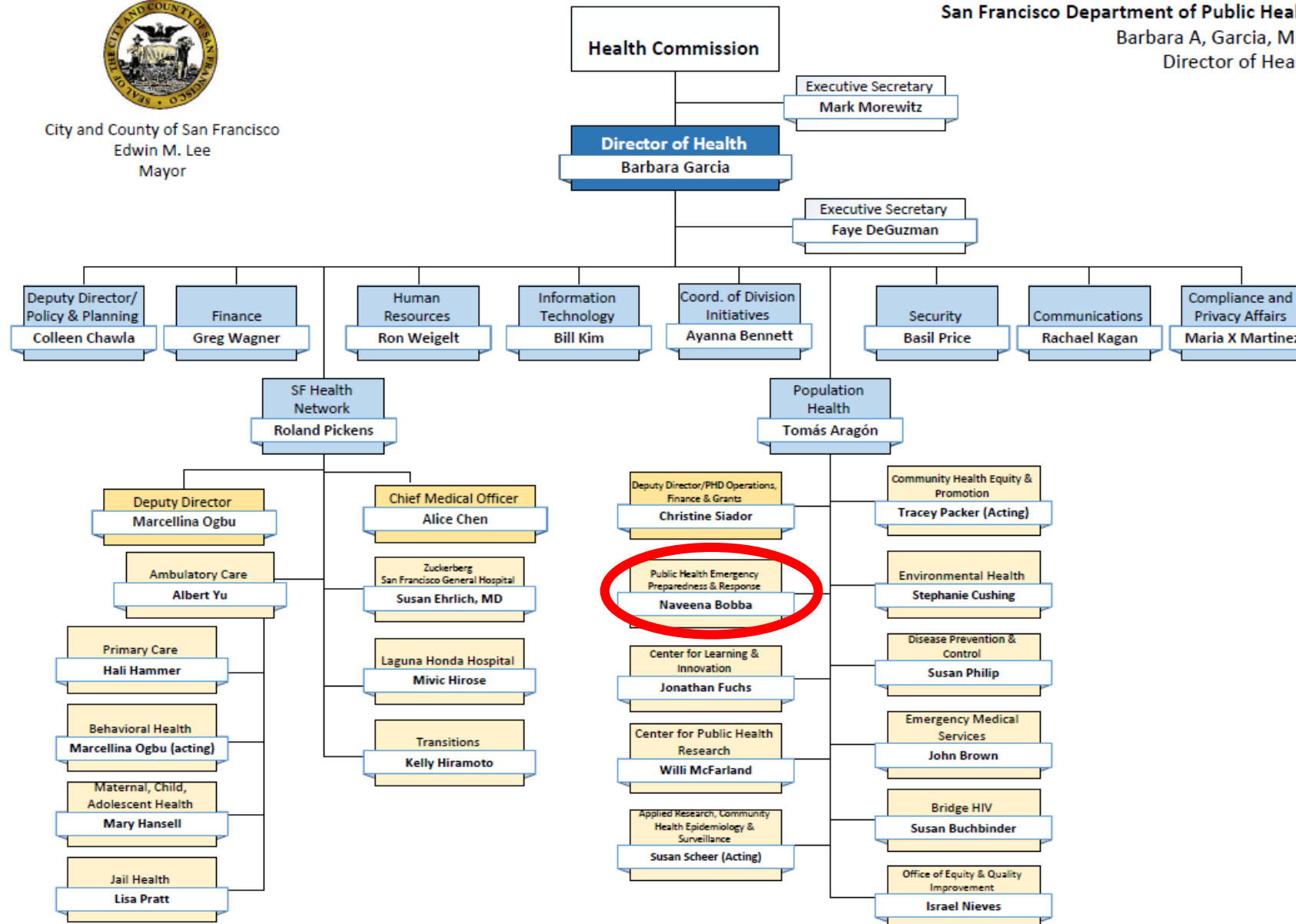
Protecting and Promoting Health and Equity





City and County of San Francisco
Edwin M. Lee
Mayor

San Francisco Department of Public Health
Barbara A. Garcia, MPA
Director of Health



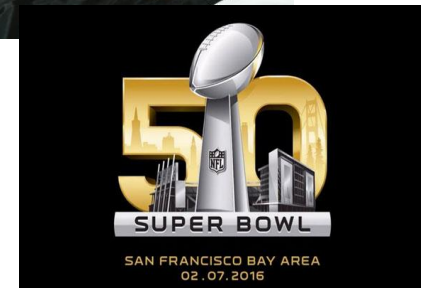
Last Updated: 4/25/2016

Public Health Emergency Preparedness Capabilities

	Capability	PHEP	HPP
1.	Community Preparedness	X	X (Healthcare Preparedness)
2.	Community Recovery	X	X (Healthcare Recovery)
3.	Emergency Operations Coordination	X	X
4.	Emergency Public Information and Warning	X	
5.	Fatality Management	X	X
6.	Information Sharing	X	X
7.	Non-Pharmaceutical Interventions	X	
8.	Medical Countermeasure Dispensing	X	
9.	Medical Materiel Management and Distribution	X	
10.	Medical Surge	X	X
11.	Mass Care	X	
12.	Public Health Laboratory Testing	X	
13.	Public Health Surveillance/Epidemiological Investigation	X	
14.	Responder Safety and Health	X	X
15.	Volunteer Management	X	X



Events 2015-16



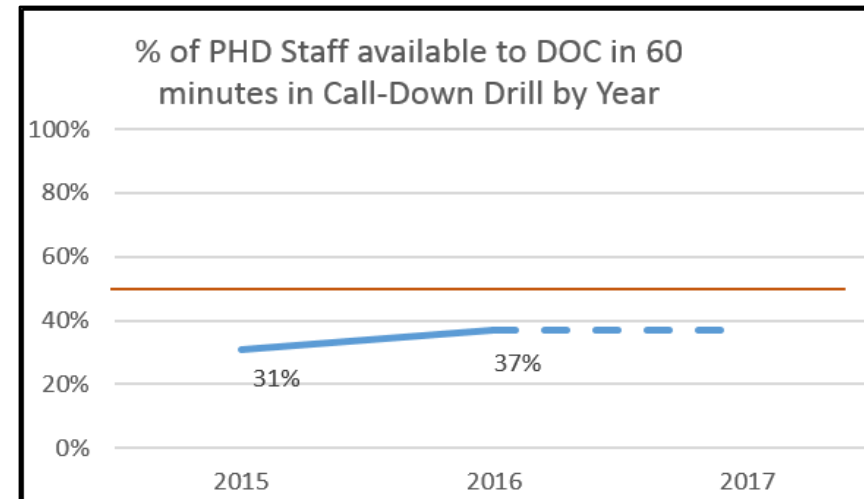
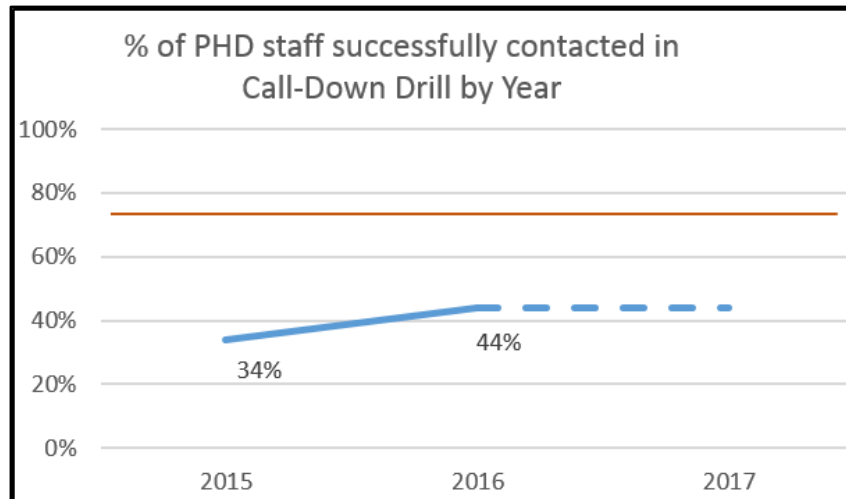
San Francisco Department of Public Health

Emergency Operations Coordination

SFDPH Staff Mobilization

Goal: To increase staff call-down drill compliance to 75% acknowledged and 50% available to respond (standard per NACCHO Project Ready)

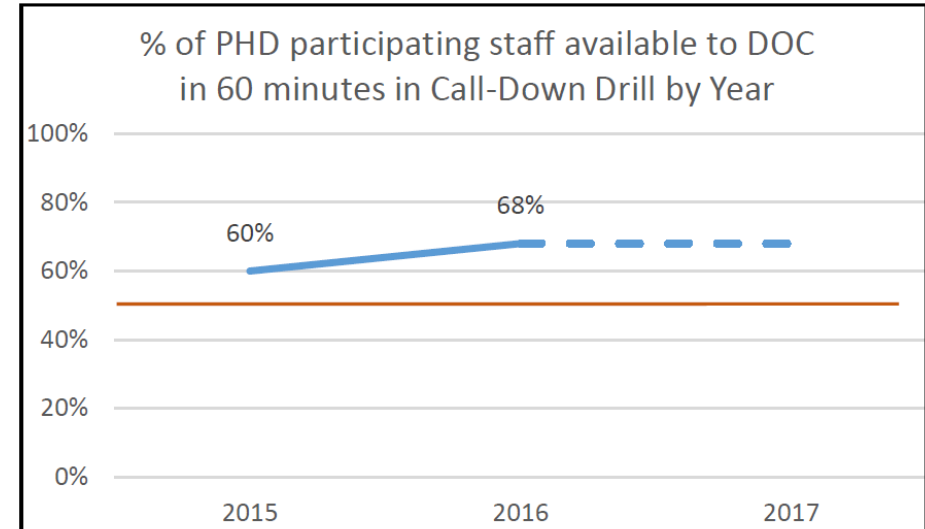
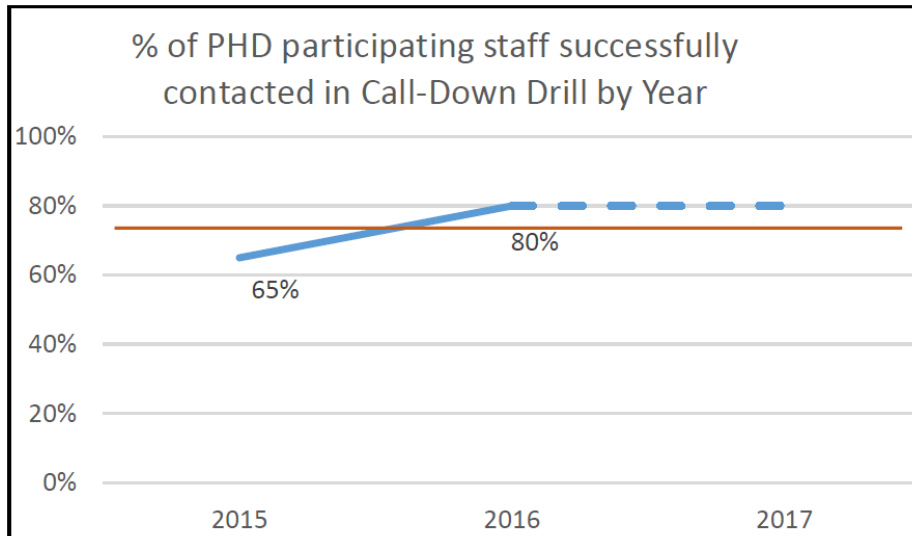
All of PHD



SFDPH Staff Mobilization

Goal: To increase staff call-down drill compliance to 75% acknowledged and 50% available to respond (standard per NACCHO Project Ready)

PHD Participating Branches

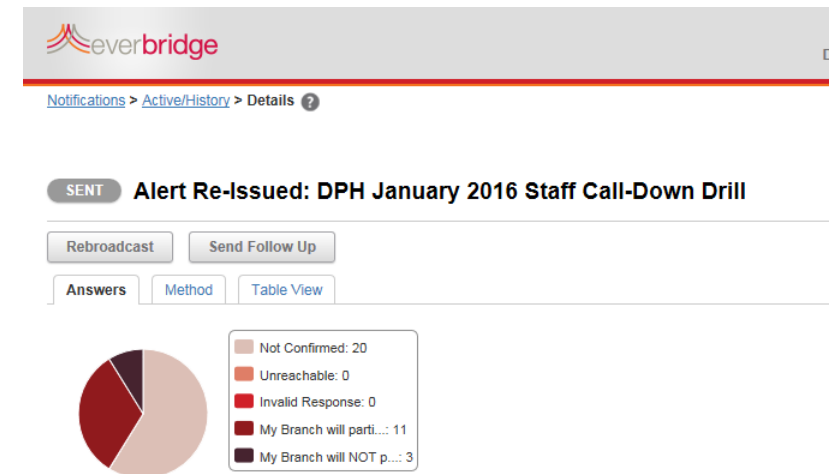


SFDPH Staff Mobilization

Goal: Increase number who participate

Mobilization Strategy

- Moving to an online notification system
- Focus on identifying and training DOC staffing pool
- Assign PHEPR liaison to specific branches
- Assistance with COOP and surge staffing plans



2015-16 SFDPH Response Highlight

- El Niño Emergency Pop Up Shelters – Med/Health Response
 - *Roving Medical Teams with Behavioral Health Support*
 - *On-site Communicable Disease Training*
 - *Environmental Health Shelter Inspections*
- Multi-Agency Planning
- Five Activations



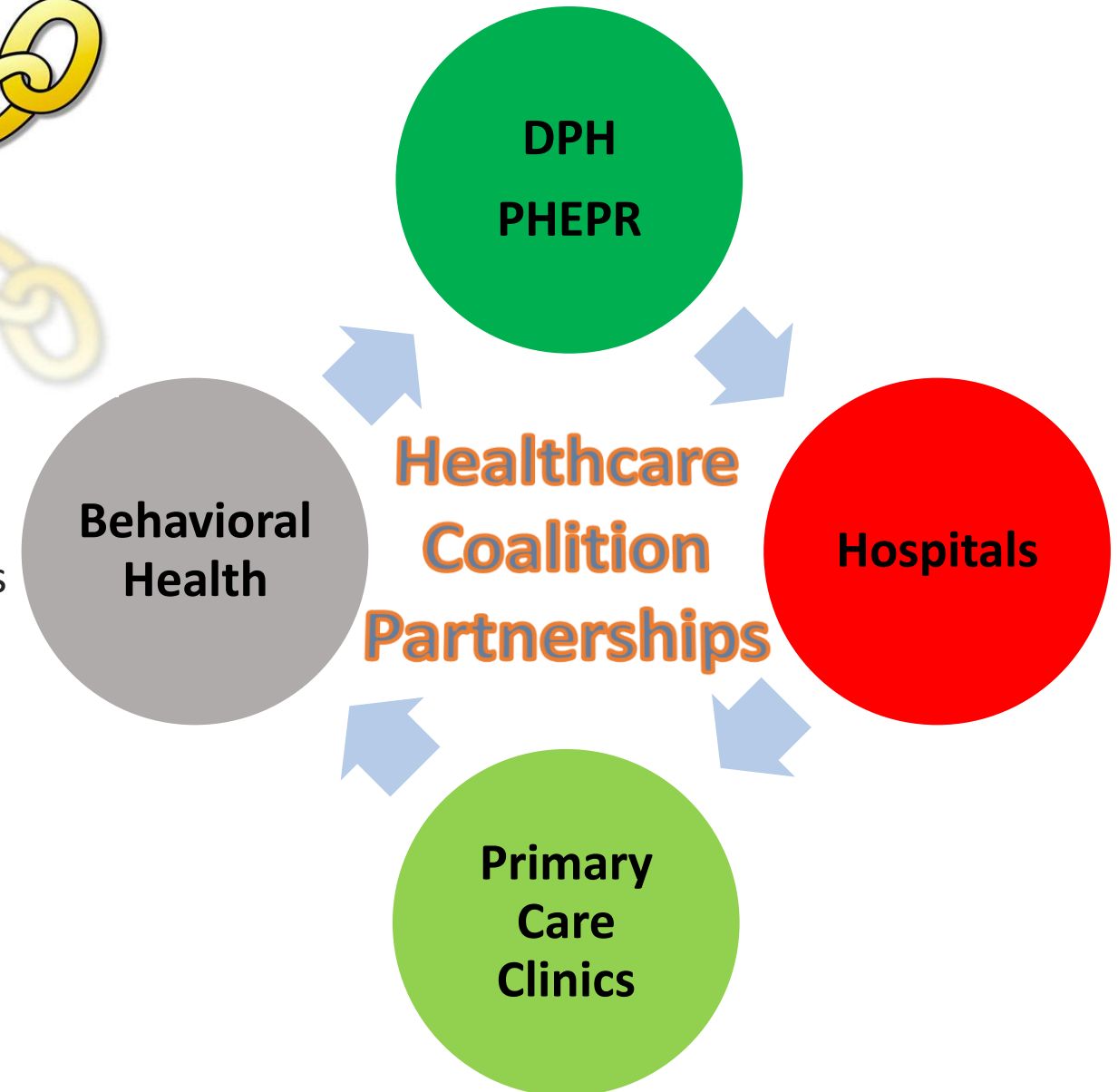
Healthcare Coalition Preparedness

Medical Surge

Enhancing the Healthcare Coalition

2015-16 Focus
Strengthening the Linkages

- Increased Collaborative Planning
- Leveraging Collaborative Training Opportunities
- Exercises/Drills -- **TOGETHER**
- Information Sharing for Lessons Learned



All-Hazards Health/Medical Exercises, Trainings, and Special Events



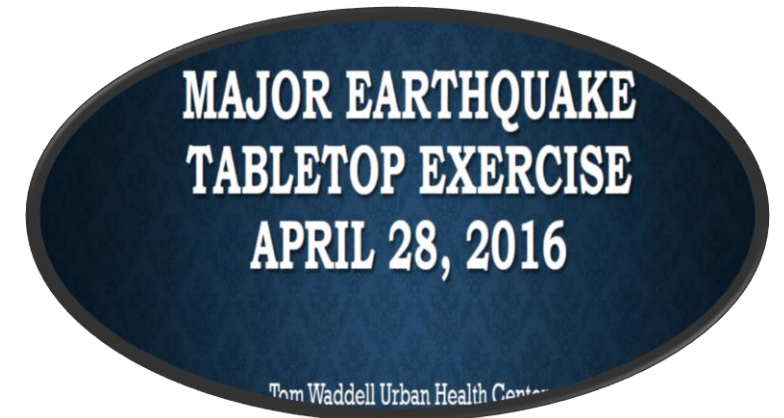
Super Bowl 50 EOC Activation
January 29 – Feb 8, 2016



Field Care Clinic Tent Drills
October 2015 & March 2016
Medical Surge Preparedness



Collaborative Partnerships
Supporting Contra Costa County PHD Functional and
Access Needs POD Exercise
June 2016



SFDPH Clinic Tabletops and Drills
Preparing for an MCI

Health Care System Response Highlight

Super Bowl Activation

- Priorities
 - Establish and maintain ongoing communications for field and facilities
 - Prepare for Medical Surge
 - Prepare for specific threats
 - Situation Assessment and Information Gathering
 - Information Sharing



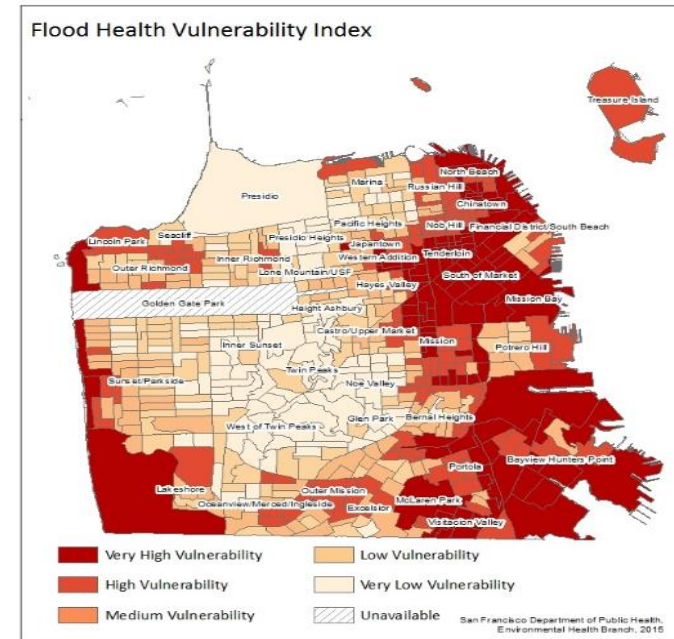
Community Preparedness

2015-16 Focus

To support neighborhoods, both people and services, to prepare for, respond to and recover from disasters, both large and small.

- Vulnerable Populations

- ☐ Climate Change
- ☐ Sheltering in Place
- ☐ Communications Plan



2015-16 Focus

To support neighborhoods, both people and services, to prepare for, respond to and recover from disasters, both large and small.

- Behavioral Health Contractors
 - ❑ Continuity of Operations
- Community Based Organizations
 - ❑ MOU



2015-16 Focus

To support neighborhoods, both people and services, to prepare for, respond to and recover from disasters, both large and small.

- On-going and Collaborative Planning with Government and Community Partners

- ☐ CCSF Office of Resiliency and Recovery
- ☐ City Administrator's Office
- ☐ Human Services Agency
- ☐ Mayor's Office on Disability
- ☐ Department of Emergency Management and other City Departments
- ☐ SF Interfaith Council
- ☐ SFCARD and other community based organizations



16-17 Events?

Thank you!

- PHEPR team members:

Tara Conner

Teri Dowling

Heather Hertzell

Brian Kim

Cindy Lambdin

Amy Ovadia

Kenpou Saechao

Rebekah Varela

Douglas Walsh